



Campaign for

H  **PE**

Building A Stronger Community

Campaign for **HOPE**

Hope is defined as a feeling of expectation and desire for a certain thing to happen. Unfortunately, for the children and families served by Child Saving Institute (CSI), **hope** can seem unfamiliar.

- ♥ A family trying to find Mental Health Services for a child who is struggling with depression and anxiety. This child deserves **HOPE**.
- ♥ A parent who fears that their child will be expelled from preschool because of challenging behaviors. This parent deserves **HOPE**.
- ♥ A teenager involved with the juvenile justice system who is looking for an opportunity to change. This teenager deserves **HOPE**.
- ♥ A family that is expecting their first child but is met with the task of finding high-quality Early Childhood Education. This family deserves **HOPE**.

When life becomes challenging, **hope** shouldn't be so distant. CSI has provided **hope** and healing for children and families through supportive services for 130 years. With your support, we can build a stronger community. Together, we can provide **hope**.

Pediatric & Adolescent Therapy

In the past six years, Child Saving Institute (CSI) has doubled the size of its Mental Health Services program to meet the growing needs of the Omaha community. Yet, CSI has a waitlist of over 150 children and youth waiting to receive Therapy and Medication Management Services. A space that is conducive to address trauma, promote safety and allow for healing is critical.



Emergency Shelter

CSI's Emergency Shelter was originally built for young children but the older teens who live there today have different needs. The new Emergency Shelter will add robust educational services, a physical activity space and allow for youth to have their own bedrooms—all of which are crucial to a youth's successful physical, emotional and mental health.



Supportive Early Education (SEE)

There are many vulnerable preschoolers living in poverty and experiencing the impact of trauma in the Omaha community at risk of expulsion. CSI wishes to directly provide Supportive Early Education services for traumatized preschoolers unsuccessful in traditional early learning environments to help them to heal and prepare them for kindergarten... and for life.



Early Education Expansion

Since 1971, CSI has provided quality Early Childhood Education to the Omaha community. Nationally, the need for high-quality Early Childhood Education continues to outpace the availability. The proposed expansion of CSI's Early Childhood Education Center would increase its licensed capacity by 25%, while also incorporating STEAM learning across the center.



Our Future



Main Entry Drive from Douglas Street

Renderings courtesy of TACKarchitects.



FUTURE CAMPUS

Aerial View

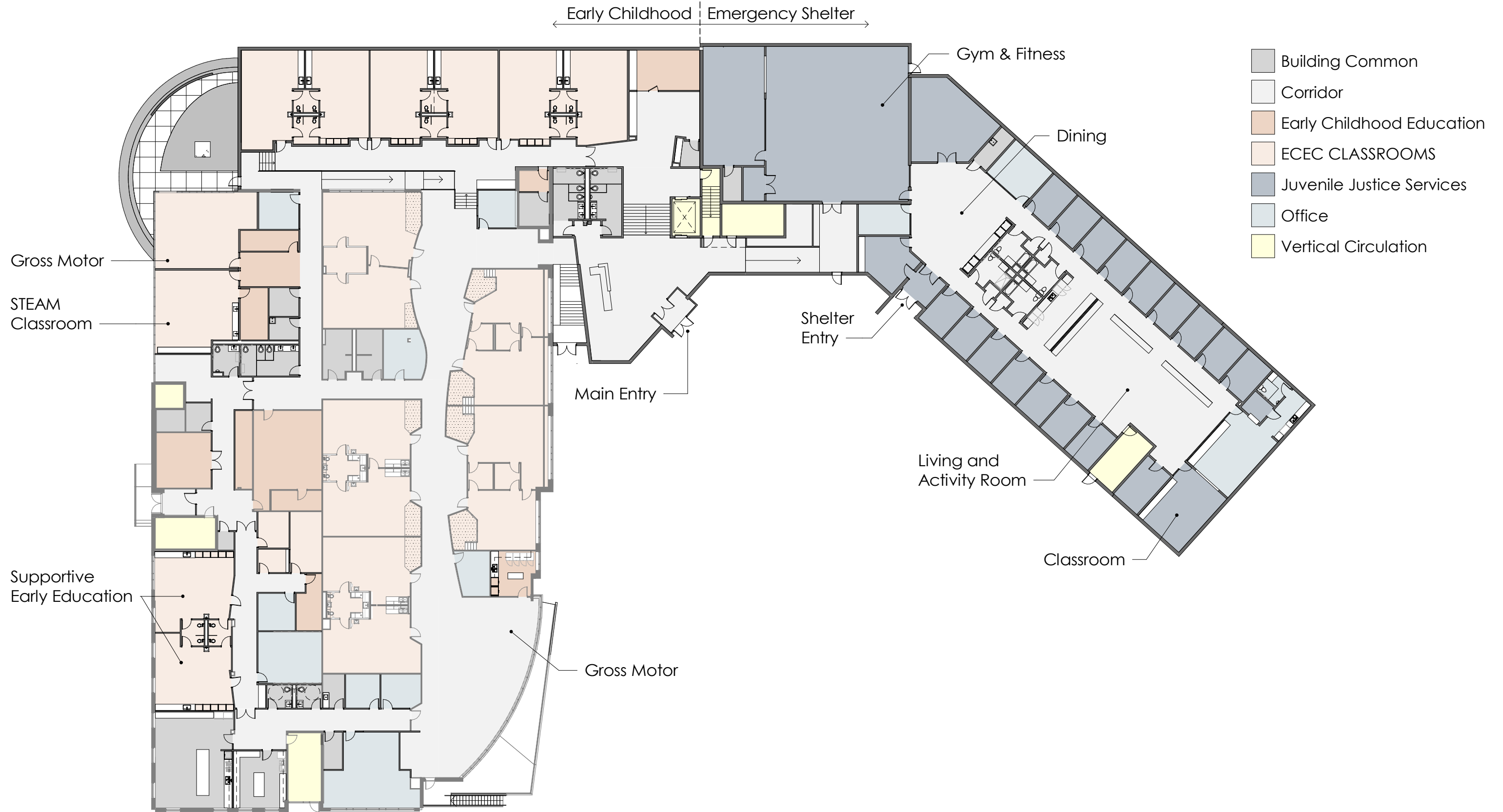
Rendering courtesy of TACKarchitects



View from 46th & Dodge



Interior Lobby







Why Campaign for Hope?

Pediatric & Adolescent Therapy

An astonishing number of youth living in the United States are exposed to trauma. In fact, about half of youth served by Child Saving Institute (CSI) experience a traumatic event. Many experience more than one such event. Sadly, many children and youth live with chronic trauma and have had no time for healing between events.

As of August 2022, CSI has seven outpatient mental health practitioners and one advanced practice registered nurse (APRN). In the previous six years, CSI grew its Mental Health Services program from serving 213 clients per year to over 400. CSI's ability to expand further to meet the increasing demand is restricted by its facilities. CSI's existing building simply was not designed with the growing needs of a mental health clinic in mind. CSI routinely has a waitlist of over 150 children and youth waiting for services. This waitlist means that it would take two to three months to serve a client who calls our office today. CSI's goal is to expand to 16 mental health practitioners and two APRNs, to provide care to 800 clients annually.

Private office space for therapy is a necessity. Currently, CSI therapists are in "offices" that were originally designed as small meeting rooms or closets and were re-constructed through small projects over the last 15 years. Consequently, therapists are scattered throughout both levels of the building. There is not a designated, private waiting room, little storage space and no functional client flow through the building.

The ideal program experience requires a private area to check in for appointments, a separate waiting space, dedicated office space for the office manager and billing specialist, soundproof treatment rooms and a secure area for clinicians' offices. To achieve this, a new space designed with the trauma experienced by the clientele in mind and that promotes safety and healing, is required.



Emergency Shelter

Child Saving Institute's (CSI) Emergency Shelter provides a safe and nurturing short-term placement for youth in crisis. In so doing, the Emergency Shelter staff ensure all youths' essential needs are met, including the needs for physical and behavioral health care, food security, education, recreation and crisis intervention. The homelike environment provides stability and consistency during the transition, and services address each youth's immediate need for safety through a structured daily schedule. The focus is on therapeutic care with individualized service planning to emphasize strengths, address areas of need and reinforce positive behaviors.

The Emergency Shelter operates 24/7 with awake staff around the clock (with a 4:1 youth to staff ratio during waking hours and 6:1 during hours of sleep). Youth attend their home schools and, if needed, are provided with education and support to prepare them for independent living. Although licensed by the state of Nebraska to care for up to 12 youth, CSI's Emergency Shelter has limited capacity of nine single bedrooms. Because the histories and needs of referred youth often preclude sharing bedrooms, the census is limited to nine to ensure the safety of all youth.

CSI serves 60-100 youth annually in its Emergency Shelter. The facility is insufficient to meet the needs of the current population—older adolescents, primarily males, with an average length of stay of over one month. CSI will expand capacity to 16 youth. In addition to providing individual bedrooms, there is a need for recreation and education spaces. A dedicated classroom will allow youth not currently enrolled in school to earn education credit, critical to their future success. Spaces for individual and family therapy sessions and visitation is needed. A gymnasium and outdoor areas suited for teens is a must; without this, there is no place for the teens to run, play basketball or do "normal" teen activities. Physical activity is critical to heal the mind of traumatized youth.

CSI is committed to creating an Emergency Shelter that provides the best possible care for youth. To make it a reality, a larger space that meets the complex needs of the youth is needed. A new facility will allow CSI to serve more youth, but more importantly, it would allow CSI to serve its current at-risk youth better.





Supportive Early Education (SEE)

As a leader in Early Education for the last 50 years, Child Saving Institute (CSI) has evolved with the changing needs of children who need additional support. It's an unfortunate fact: There are many vulnerable preschoolers living in poverty and experiencing the impact of trauma in the Omaha community. Their ability to develop healthy relationships—a key element of academic success—is negatively impacted by their experiences and environments. Research shows that trauma triggers toxic stress in the brains of young children, leaving the brain in a constant, chaotic “fight or flight” state, thus making it difficult to make friends or learn in such a state.



The reality is that many children are at risk for expulsion due to their behaviors and need timely supportive services:

- Preschoolers are expelled at three times the rate of children in kindergarten through 12th grade.
- Preschool-aged boys are four times as likely to be expelled as girls.
- African American children are expelled almost twice as often as Latino and White children and more than five times as often as Asian American children.

Research shows that young children who are expelled or suspended are up to ten times more likely to drop out of high school, hold negative attitudes about school and end up in jail.

CSI currently provides consultation services to support such children throughout Omaha. Staff work with teachers and caregivers to reduce challenging behaviors and increase social and emotional skills and school readiness.

The need is apparent, and CSI is positioned to take the next steps: to directly provide Supportive Early Education services for traumatized preschoolers unsuccessful in traditional early learning environments. Program activities will specifically address those traumatized children and help them build trusting relationships with adults and peers. To achieve this goal, CSI will add two Supportive Early Education classrooms to accommodate up to 16 children. The limited class size of four children per room is due to the complex emotional and behavioral issues of the children. CSI's goal is to help them heal and prepare them for kindergarten... and life.

Early Childhood Education Expansion

In 1971, Child Saving Institute (CSI) opened a childcare program for mothers of young infants who needed to work to support their families. CSI was one of the first centers in Omaha addressing this critical need.



Nationally, the need for high-quality Early Childhood Education continues to outpace the availability. The impacts within Nebraska are felt especially hard as Nebraska leads the nation for households where both parents work, and over 200 childcare centers were lost due to the impact of the COVID-19 pandemic.

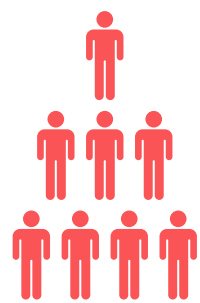
CSI's Early Childhood Education Center is currently licensed for 120 children and is located on CSI's main campus. The proposed expansion of the center will add four classrooms to the first floor through a remodel. This expansion will increase the licensed capacity by 25% and increase the number of children served to 150. Since its inception, CSI has provided quality childcare for parents across the socio-economic spectrum. CSI is actively working to expand the number of early Head Start slots available in its center through the Early Head Start-Child Care Partnership.





Community Impact

Number of Clients Served



2,865

Omaha-area children and families received life-changing services in 2022

Age of Children & Youth

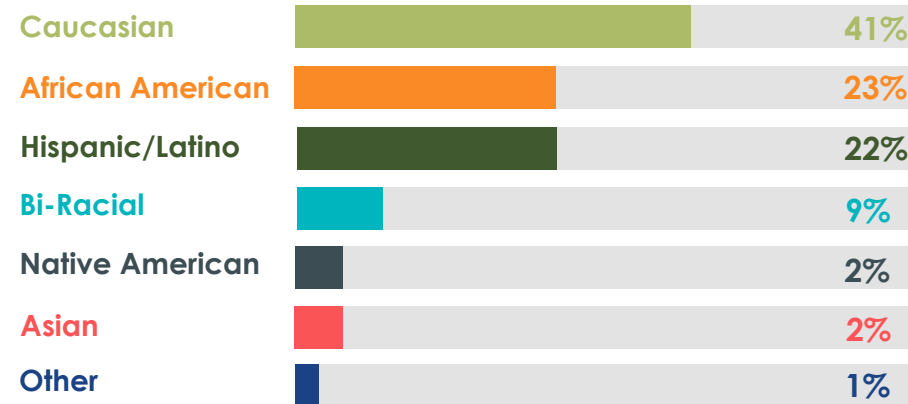


27%
0-4 years

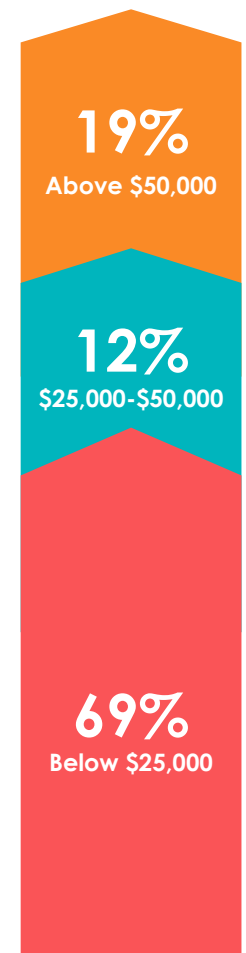
50%
5-17 years

23%
18+ years

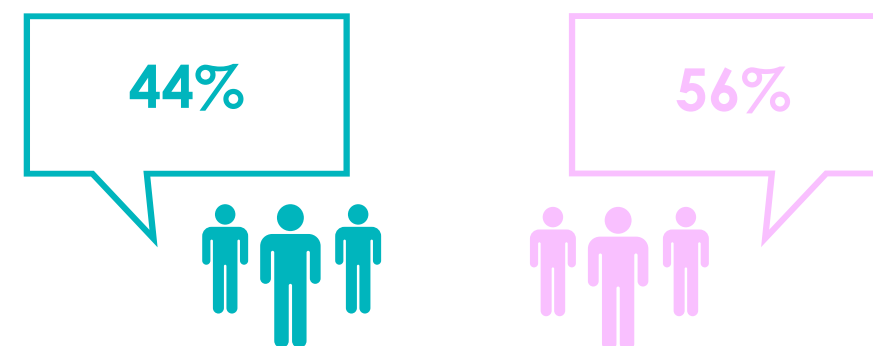
Race & Ethnicity



Household Income



Gender



Project Budget

Site Preparation.....	\$3,052,228
Construction*.....	\$31,755,026
Furniture, Fixtures, and Equipment.....	\$2,199,205
Technology and Security.....	\$1,008,546
Project Contingency.....	\$3,484,995
Deferred Maintenance Fund.....	\$2,000,000
Programmatic Investments.....	\$2,500,000
Total Campaign Budget.....	<u>\$46,000,000</u>

*Includes contractor fees

Campaign Chairs



Melanie Hecker



Cindy Heider

Thank You



Thank you to each and every one of our supporters. We could not continue to do this important work without each of you. Because of your generosity, we will continue to provide life-changing services to more children and families in the Omaha community—long into the future.

Campaign History: *Then to Now*

- 2012**
How It Started
 Child Saving Institute (CSI) initially indicates an interest in the Jensen property.
- 2014**
Partnerships Formed
 Conversations with UNMC began to discuss the leased playground property and the old Commercial Federal building.
- 2018**
Land Sales
 Jensen property goes up for sale; however, CSI was not able to secure a deal. CSI sends a letter of interest to UNMC for the Commercial Federal property.
- 2019**
Land Acquisition
 CSI purchases the Jensen property for \$1.85 million.
- 2021**
Post-Pandemic Push
 The UNMC and CSI property transaction was executed.
- 2022**
Project Development
 Demolition of the Commercial Federal and Jensen Property was completed. Campaign budget and project approved by the CSI Board of Directors.



HELP BUILD A STRONGER COMMUNITY

Thank you for your support, guidance and advocacy. To continue your support of CSI's Campaign for Hope, visit childsaving.org/campaignforhope

Campaign for
HOPE



4545 Dodge St.
Omaha, NE 68132
402.553.6000
childsaving.org